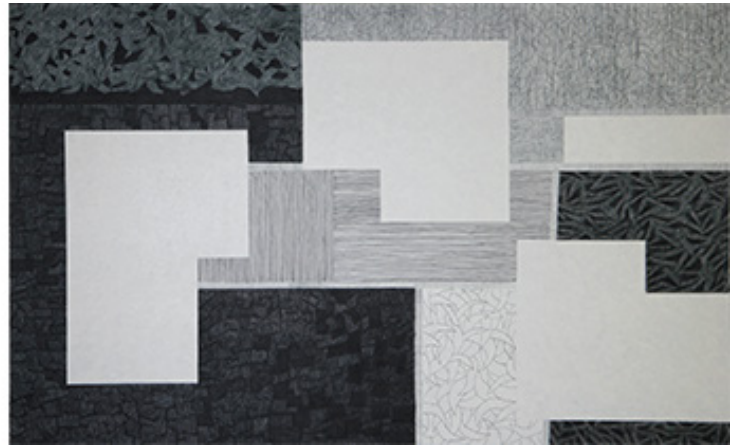




diptych landscape1  
2014, ballpoint pen on paper, 1167x727mm



diptych landscape 2  
2014, ballpoint pen on paper, 1167x727mm

## **Dominique Lutringer** Solo Exhibition **Line and Territory**

**FRI 17 OCT - SAT 08 NOV 2014**

Tezukayama Gallery is pleased to present French artist, Dominique Lutringer' s solo exhibition 'Line and Territory' from 17th October – 8th November 2014.

Dominique is originally from France, with a German father and a French mother. He moved to Japan in 1992. As a European artist, with interest in Japanese culture and emersion in it since he was of a young age, he has the ability to observe Japan in unique ways.

This exhibition of new work explores the physical, social and psychological landscapes of Japan, and also the forms, mediums, subtlety and tone of Japanese aesthetics.

Created using ballpoint pen on Japanese paper, with a delicacy and light-hearted rhythm, Dominique' s unique expressions awaken a new awareness.

### **[Artist's Concept]**

Immersed in the beauty of a thing, there comes a moment when its abstract shape emerges.

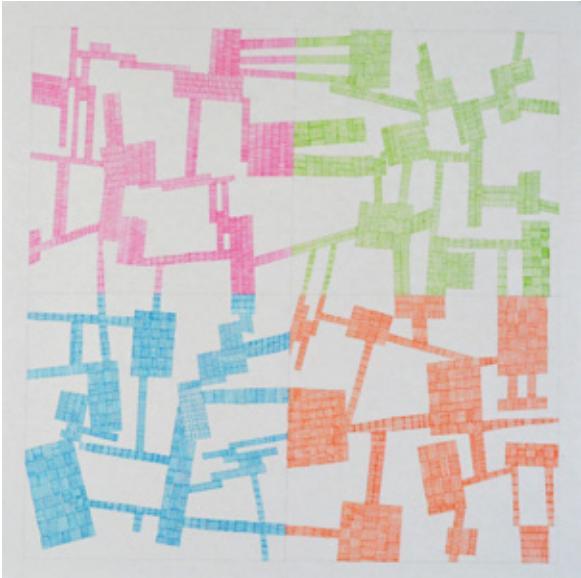
The object may be anything: a landscape, an art work, Japanese traditional design, the various shapes that human life impresses on the world. All these reveal an abstract model.

The works in this exhibition, "Line and Territory, were inspired by the title of Michel Houellebecq' s "The Map and the Territory.

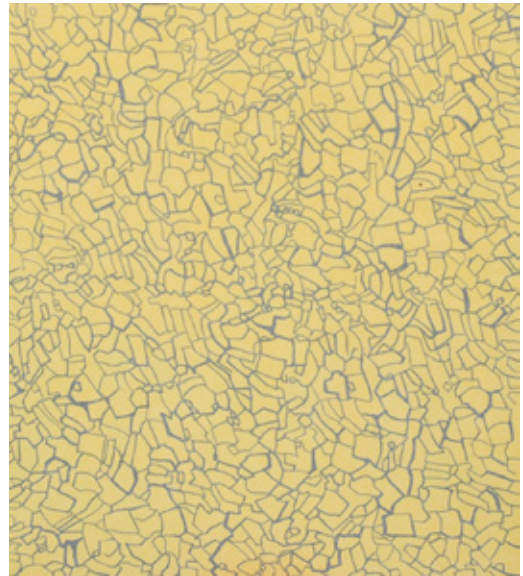
In the territory that is created by the drawn line on white paper elements of the abstract space of which I speak are assembled like buildings.

The spaces between things (ma in Japanese) is as important as the things themselves. The act of filling the screen is at the same time a creation of blank spaces.

[Latest work]



map3  
2014, ballpoint pen on paper, 650x650mm



line and yellow,  
2010, mixed media, 590x592mm

### [Art Critique]

#### New Approach

Moving away from his large paintings which focused on material and format, Dominique Lutringer presents here a series of drawings in the lineage of the new American abstraction.

This abstraction is a mix of organic and geometric representation (ref: Jonathan Lasker).

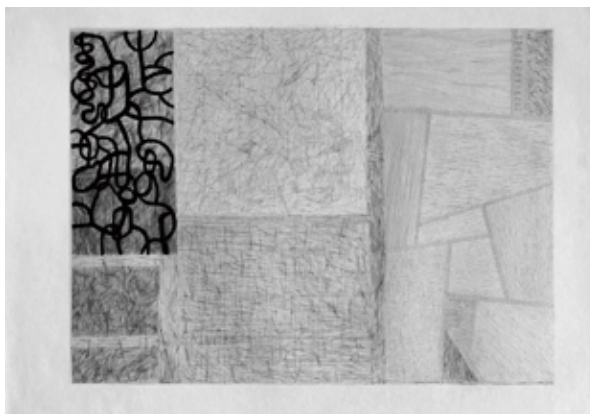
This is a collection of small format work on paper, in which a successful mix of diversity of form and color is achieved.

These designs combine rigour and freedom.

Color processing, and in particular the use of a ballpoint pen, brings a new identity to his work, which is more refined, more sophisticated.

A new message opens a new vision.

Michel Dejean Artist



landscape4  
2014, ballpoint pen on paper, 940x650mm

## [Biography]

### **Dominique LUTRINGER**

Born in France with a German father and a French mother.

When he was 15, he read " The Temple of the Golden Pavilion " by Yukio Mishima, and was interested in Japan.

Traveled to Japan at the age of 18 to find out the true beauty of Japan.

Studied at Strasbourg University.

Fascinated by Bauhaus's Triadic Ballet, and was interested by plastic art, and its colors and shapes.

Painted and acted in France and Canada.

Living in Japan since 1992, devotes himself to painting.

His works are based on paintings for individuals, or for luxurious hotels and restaurants, and having exhibitions in art galleries and department stores.

Opened workshops at National University of Singapore and at Kinki University.

Did collaborations with Japanese traditional handicrafts, such as Japanese pottery and kimono.

Was nominated for the 100 artists, which was chosen by the Michelin top 100 chefs.

## [Exhibition Information ]

Dominique Lutringer Solo Exhibition  
"Line and Territory "

Friday October 17th - Saturday November 8th 2014

\*Opening Reception: Friday October 17th 18pm (artist in attendance)

Gallery Opening Hours:

Tue-Sat: 11:00-19:00

Sun, Mon & Holidays: Closed

### **TEZUKAYAMA GALLERY**

Yamazaki Bldg. 2F, 1-19-27 Minami-Horie, Nishi-ku, Osaka

t: 06-6534-3993

e: info@tezukayama-g.com

f: 06-6534-3994

<http://www.tezukayama-g.com>

Contact : Chie Uchida

