

Hirohito Nomoto Photo Exhibition

LIFE

2012.Feb.3 fri - Feb.25 sat



"Façade"

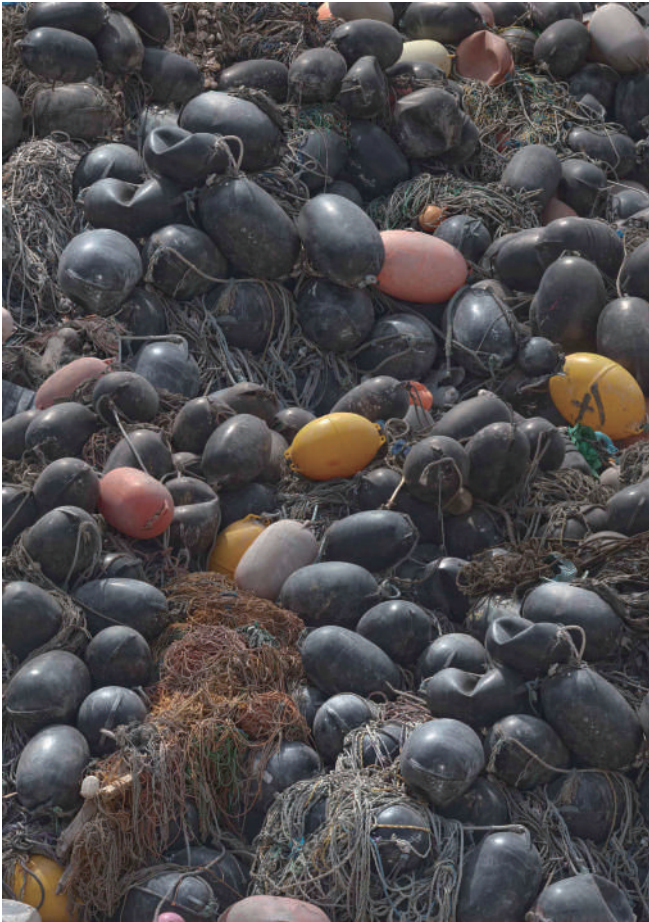
A few weeks after the Tohoku earthquake, the photographer, Hirohito Nomoto(a.k.a nomoto piropiro) visited the disaster area where the earthquake and consequent Tsunami caused the biggest damage, whilst there he started to work on the two photograph series, "Façade" and "Debris".

Firstly, "Façade". Nomoto recorded the façade of various buildings such as residences, shops, schools and even sheds which were badly damaged but still left standing after the Tsunami hit.

Using a special lens, his work captures the façade of each building in detail emphasizing its structure, function and design. Almost like the work of an architecture photographer "Façade" aims to allow the viewer to try and see beauty amidst such catastrophic conditions.

For "Debris", he chose rubble as a topic. For this he used images of the tones of debris that were being shifted and trying to be classified in the devastated area. The images were taken with high quality digital equipment and edited on a computer to form a "patchwork" composed of millions of pixels to complete a single ultra-high-resolution image.

Although the details of every single rubble pile can be clearly seen, when printed this overwhelming amount of information put together by a large number of pixels almost resembles an abstract painting.



"Debris"



"Debris"



"Facade"



"Facade"

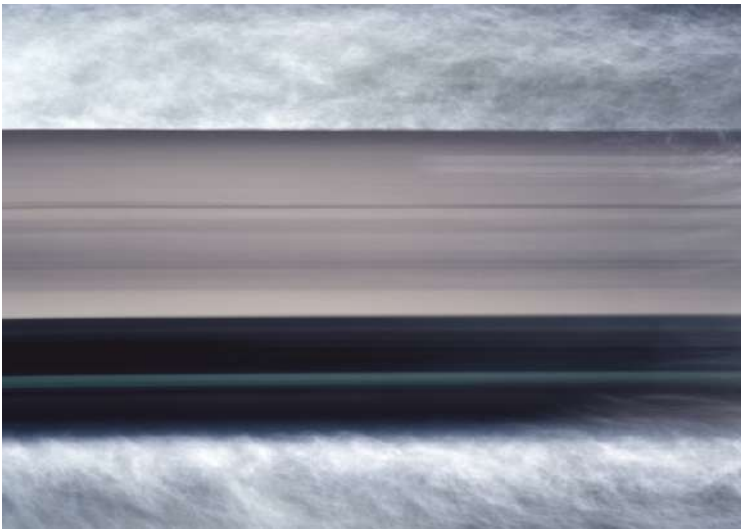
Throughout the series, there is one common thing that is Nomoto's objective view on the subject. He tried to keep his emotions away as he worked on this project, trying to eliminate the tragic aspects of the disaster whilst daring to portray a detached view of the physical facts. Then, instead of capturing the reality as a huge display, he delved deeper into the individual details. Nomoto said that's the best way to tell what really happened that day. At this moment, most of the subjects used on his work were removed and people have left the area in a bid to recover and rebuild. He transformed such an emotional subject into universal art to show us loss and disaster our daily life. This needs to be remembered forever.

Nomoto Hirohito' s past photpgraphic series



“into the silent land”

This is a view on daily life in Osaka where Nomoto is from, however the blue grey images make the audience feel that is a completely different world with silence.



“Lines”

He has recorded passing vessels on Dojima River in Osaka everyday. This river had supported the economy of this country's, up until the Meiji Restoration (around 1870s). By recording using a time lapse technique, he tries to reproduce the scenes of the past.

Hirohito Nomoto (a.k.a nomoto piropiro)

Lives and works in Osaka

1971 Born in Osaka, Japan

1994 Osaka University of Arts, B.F.A

1996 Started his career as a photographer

Solo Exhibition

2009 digmeout ART & DINER. Osaka, Japan

2010 “into the silent land / kobe” / TANTO TEMPO, Kobe, Japan

“into the silent land / osaka” / TEZUKAYAMA GALLERY

Group Exhibition

2009 Tokyo Contemporary Art Fair

2010 Art Fair Tokyo

ART TAIPEI

Korea International Art Fair

“MANPUKUJI ART FESTIVAL -EN-” / Manpukuji Temple, Kyoto, Japan

2011 Asia Top Gallery Hotel Art Fair 2011 / Hong Kong

Art Fair Kyoto

“2 Dimension GALLERY ARTISTS”/TEZUKAYAMA GALLERY

Award

2008 "Digmeout prize" / Kansai ONAEB by PHaT PHOTO magazine

2009 Winning a prize / London International Creative Competition(LICC)

Hirohito Nomoto Photo Exhibition

LIFE

venue: TEZUKAYAMA GALLERY

open: 2012. Feb. 3 fri - 25 sat 11:00-19:00

closed: Sun, Mon, Public holiday.

opening reception: Feb 3rd 18:00-